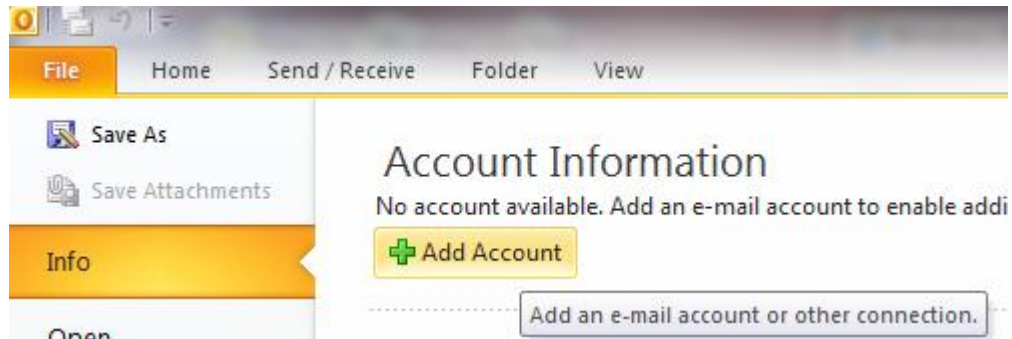


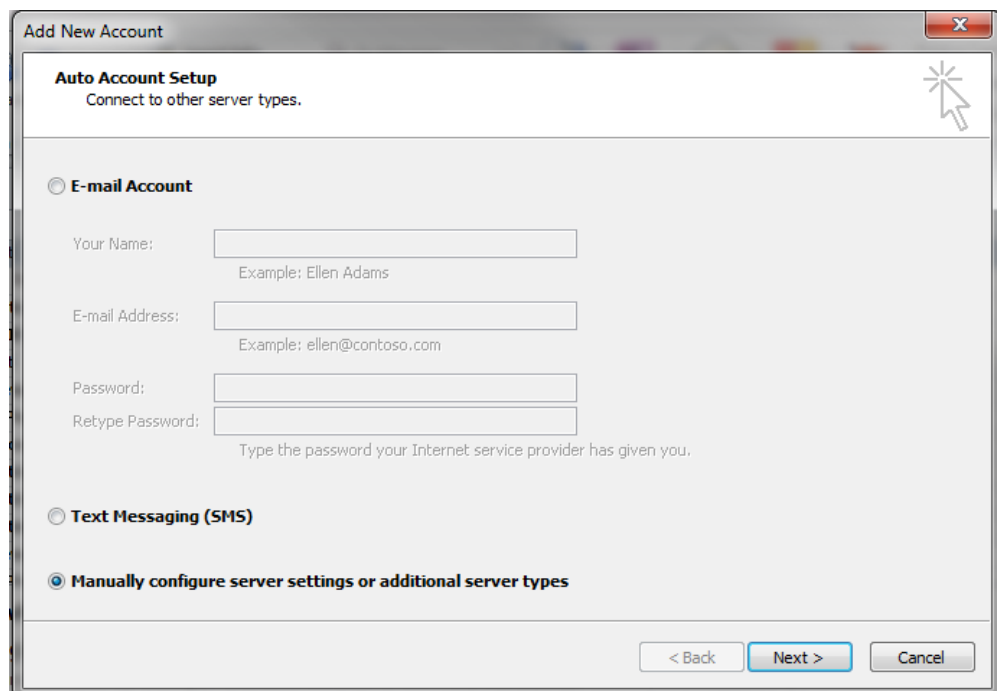
Configuring Outlook 2010 for POP

This document explains how to configure Outlook 2010 to use the POP protocol on the Kendra Server.

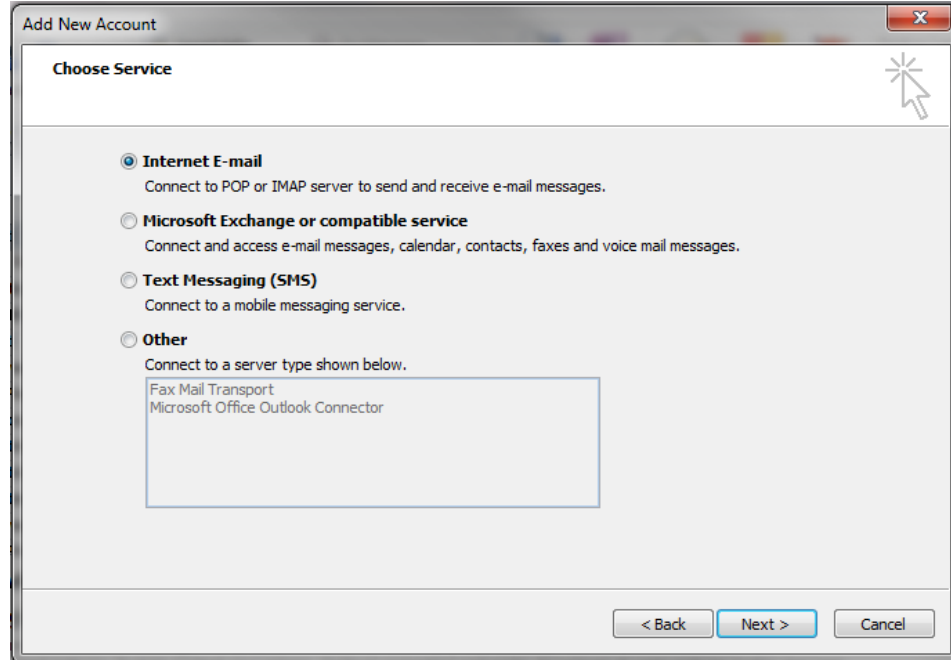
***NOTE:Some versions of Norton AntiVirus (NAV) are incompatible with Kendra's SMTP Auth service.



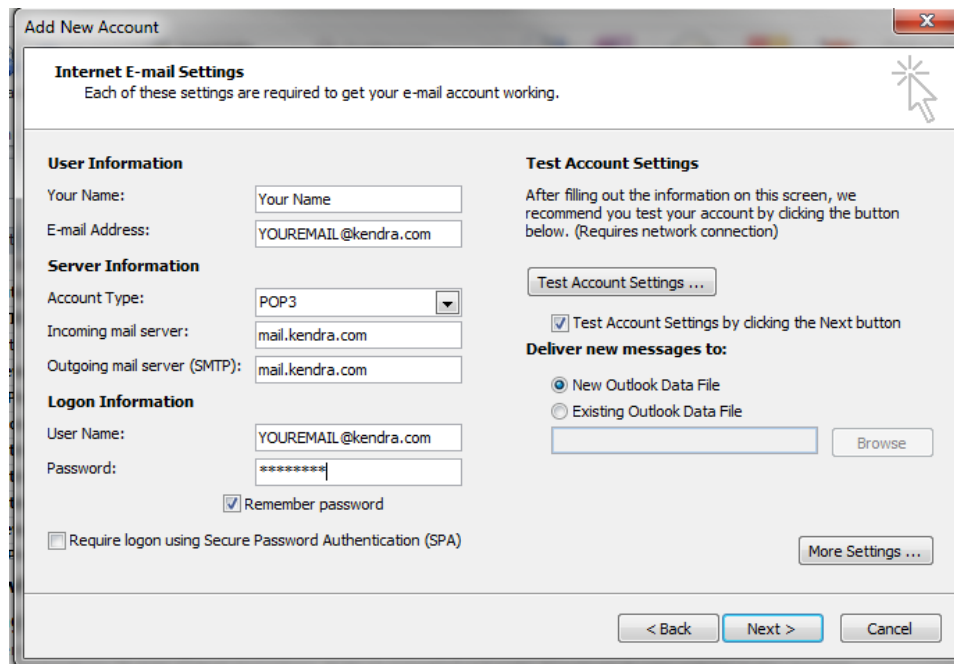
1. Open Outlook 2010 , go to **File>Info** menu and select **Add Account...**



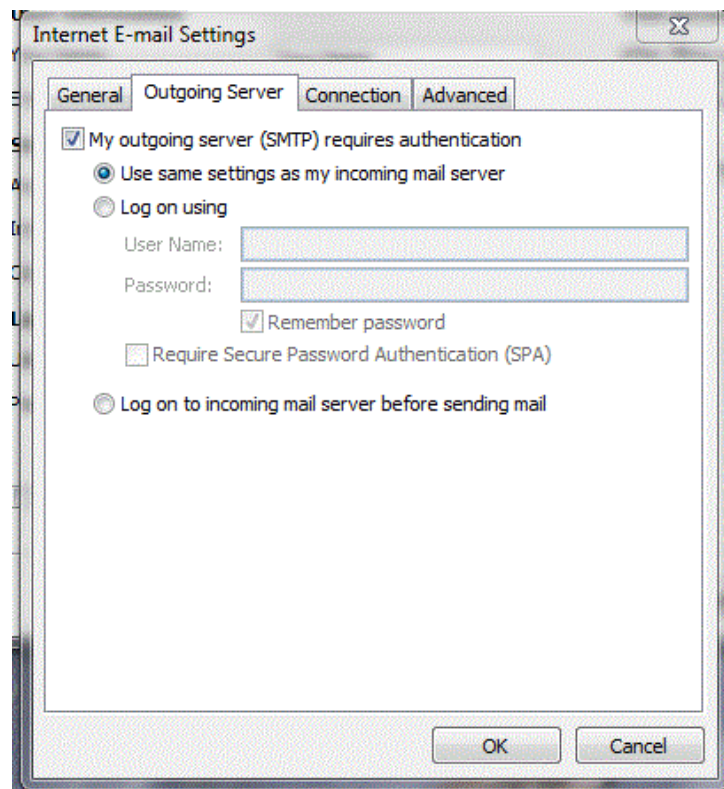
2. Check 'Manually configure server settings or additional server types' and click on "Next" button



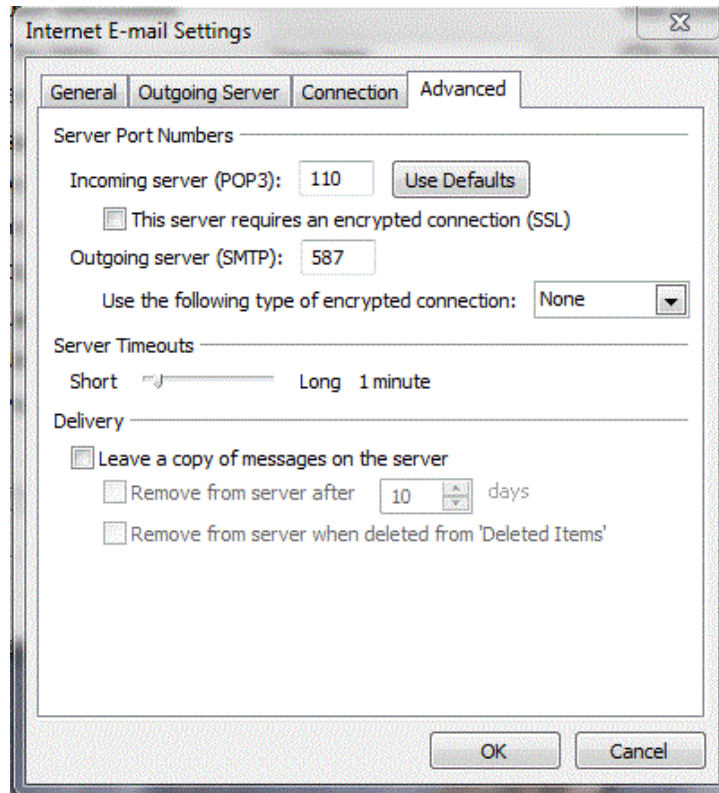
3. Check Internet Mail and click on "Next" button



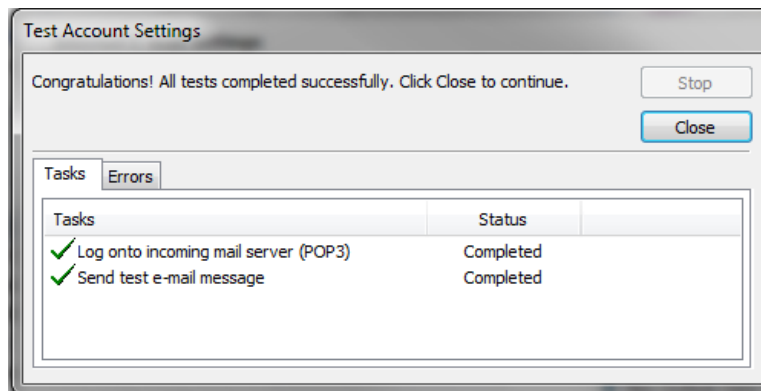
4. Within the 'Internet E-mail Settings' screen
 - Enter **Your Name** in the 'Your Name' field. (This is your full name as you would like it to appear when you send messages to other people.)
 - Enter your **E-mail Address** in the "E-mail address" field.
(YOUREMAILADDRESS@kendra.com)
 - Select **POP** from the list of server types.
 - Enter **mail.kendra.com** in the "Incoming Mail Server" field.
 - Enter **mail.kendra.com** in the "Outgoing Mail Server" field.
 - Enter your **E-mail Address** in the "User Name" field.
(YOUREMAILADDRESS@kendra.com)
 - Enter Your **Password** in the 'Password' field.
5. Click "**More Settings**" button.



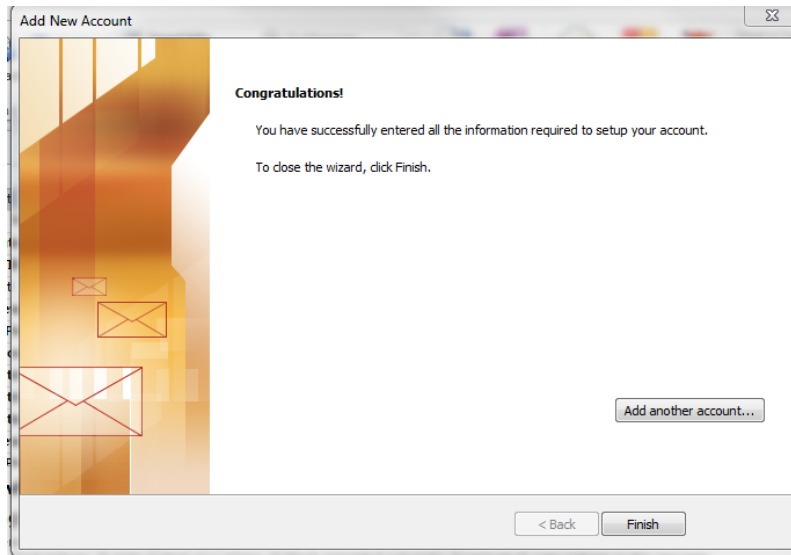
6. Click the 'Outgoing Server' tab.
 - Select 'My outgoing server (SMTP) requires authentication.'
 - Select 'Use same settings as my incoming mail server'.



7. Click the 'Advanced' tab.
8. Check the Port Numbers.
 - o Make sure that the **SMTP** Port Number is set to **587**.
 - o Make sure that the **POP** Port Number is set to **110**.
9. Click OK.
10. Click NEXT



11. Click Close



12. Click FINISH

Your Kendra account is now configured to check and send mail.

IMPORTANT: If you experience problems sending mail, please verify that your settings match the settings specified in this document.